

Cosmology with the Chandra cluster data

A. Kravtsov, D. Nagai

*M. Markevitch, S. Murray,
L. VanSpeybroeck, W. Forman,
C. Jones, O. Kotov*

*R. Burenin, C. Mullis, B. McNamara, H. Quintana,
A. Hornstrup, I. Gioia, P. Henry, H. Ebeling*

The Goal: constrain dark energy

- dark energy affects expansion of the Universe

- $H(z)$ can be “observed” through

- distances: $D(z) \propto \int \frac{dz}{H(z)}$

- growth of structure: $\ddot{\delta} + 2H\dot{\delta} - 4\pi G\rho_M\delta = 0$

$$(\delta = \rho_M / \langle \rho_M \rangle - 1)$$

- Given $\langle \delta^2(M) \rangle$, theory predicts $N_{\text{clusters}}(M)$

The Plan

1. Find many high- z clusters
2. Measure their M as accurately as possible

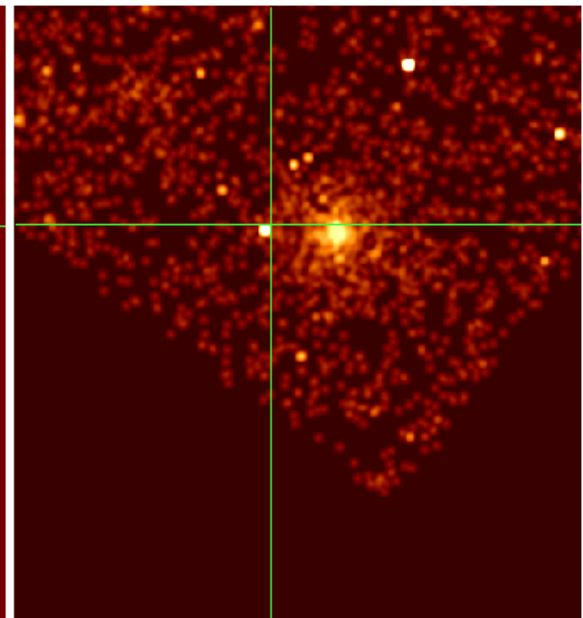
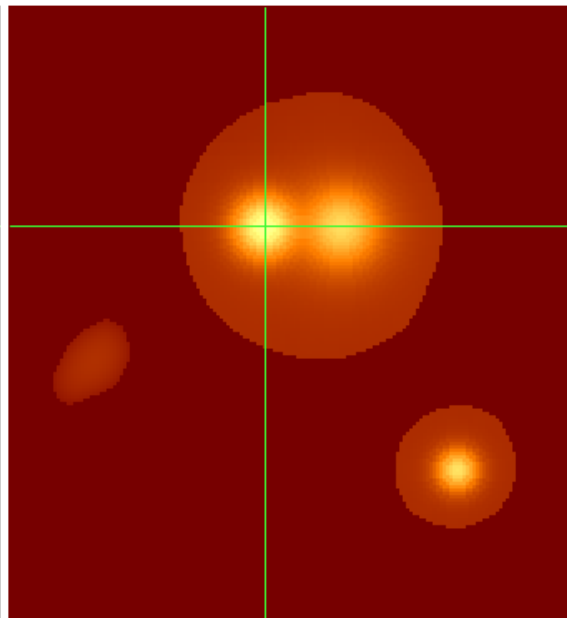
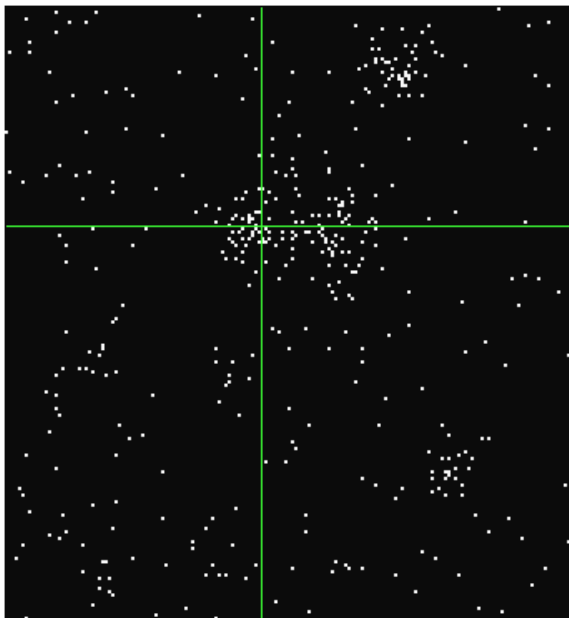
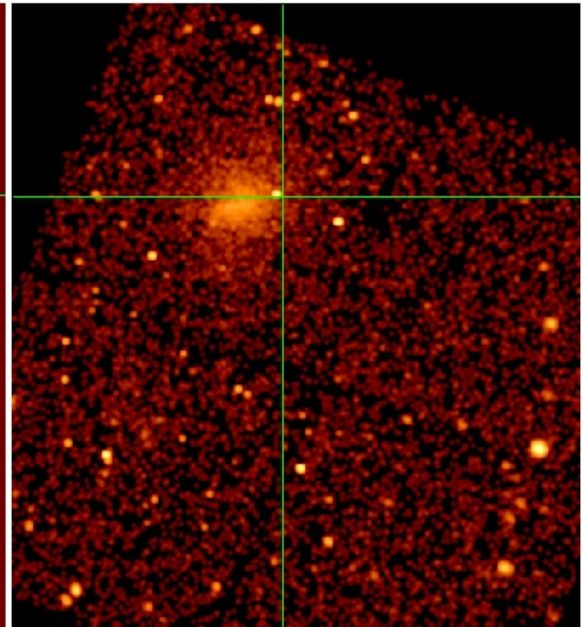
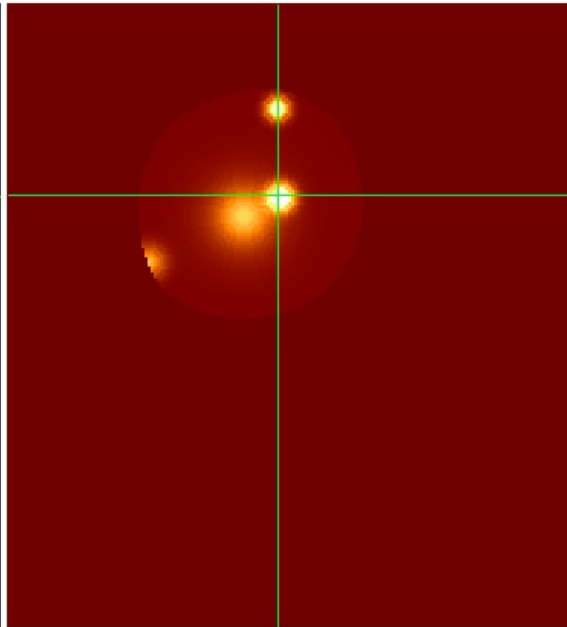
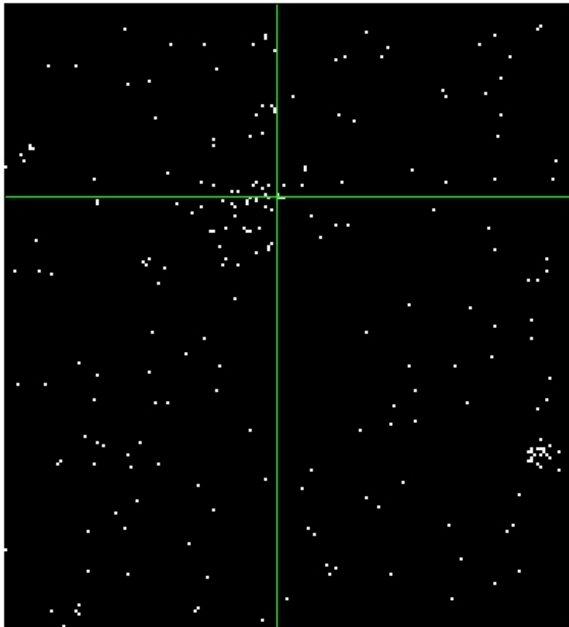
The Survey

- Over 400 deg² of ROSAT pointed observations
- 100% optically identified, 95% clean
- 37 high-flux clusters at $z > 0.4$
- Volume = $3 \times V(z < 0.1)$
- All distant clusters followed up with *Chandra* (nearly complete)
($\Delta T/T \simeq 10\% - 15\%$)

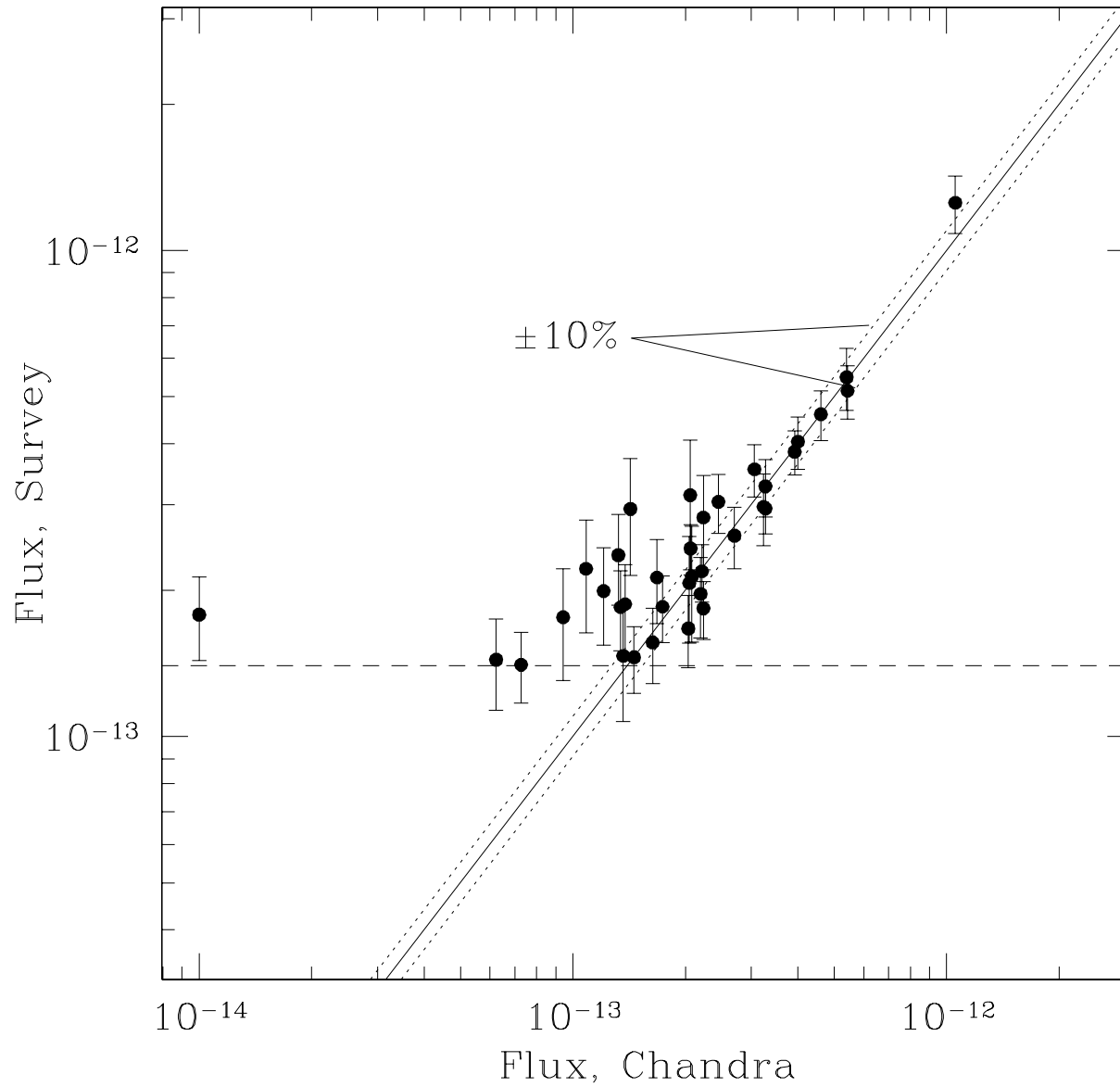
ROSAT data

ROSAT model

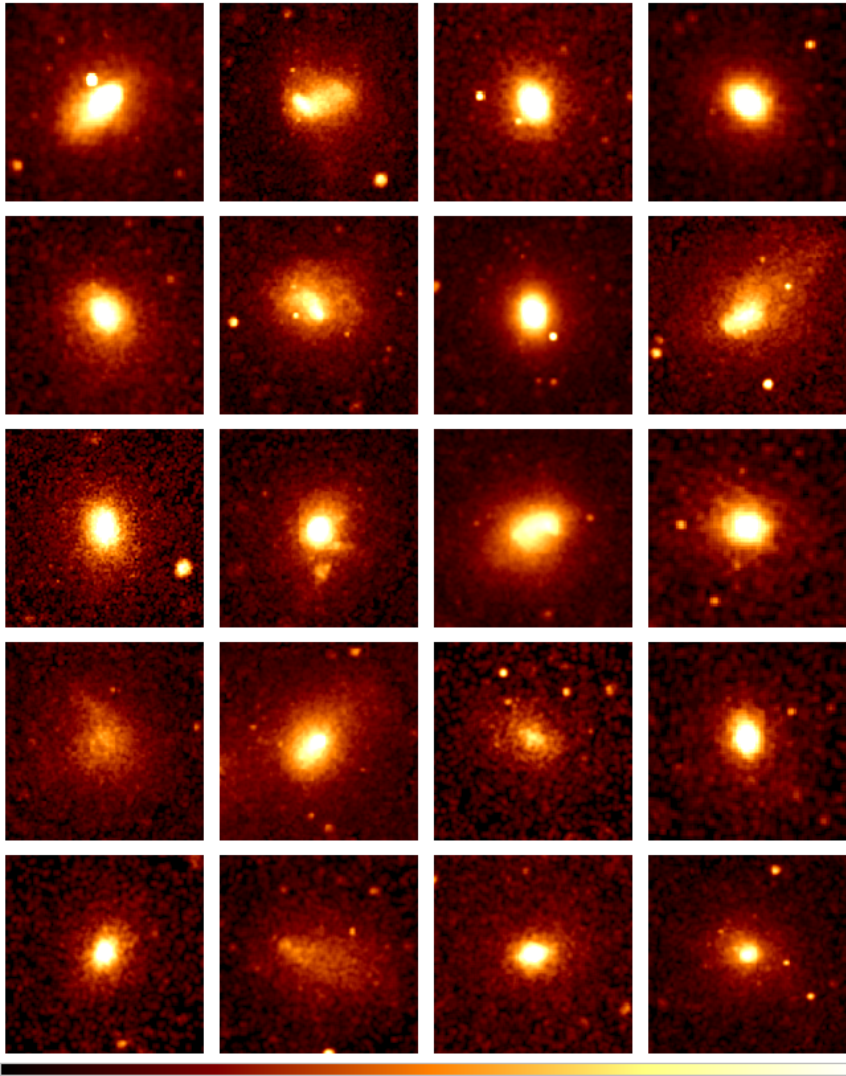
Chandra



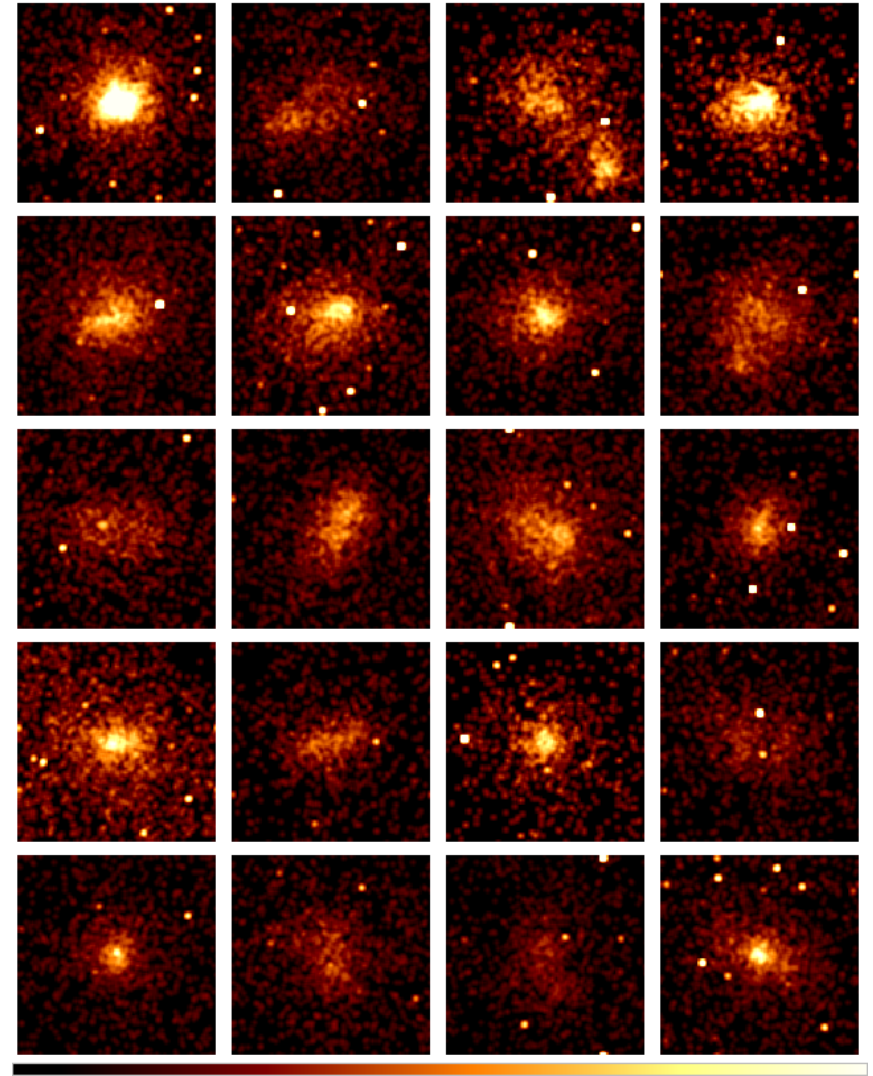
Comparison of ROSAT and Chandra fluxes



The Challenge



$z < 0.1$



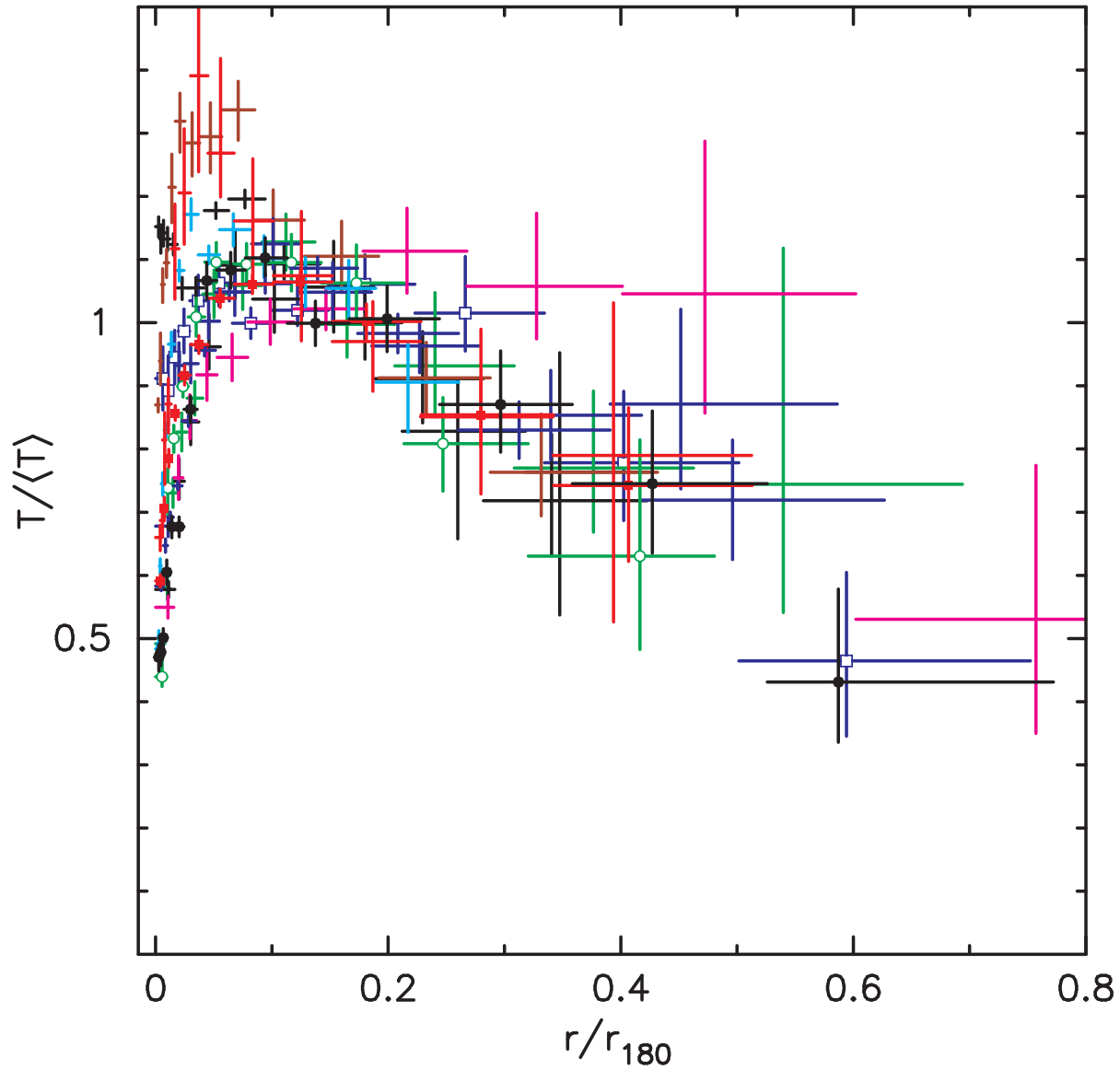
$z > 0.45$

For structure-cosmology connection, see Richstone, Loeb, Turner 1992; Jeltema et al. 2005

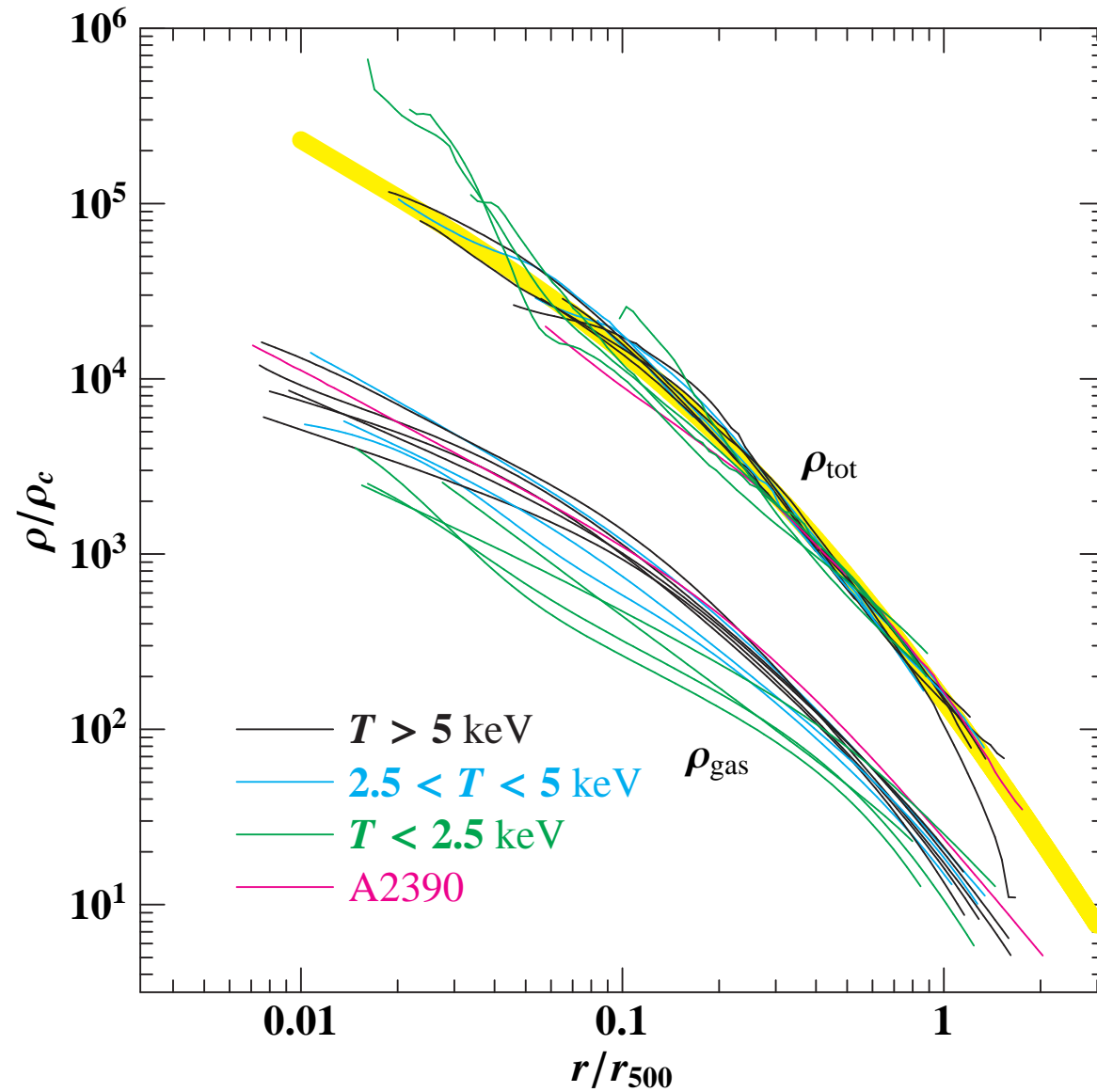
The approach

- **Develop structure-insensitive mass proxies**
- **Calibrate using realistic numerical simulations and *Chandra* observations of low- z clusters**
- **Use these proxies for high- z clusters**

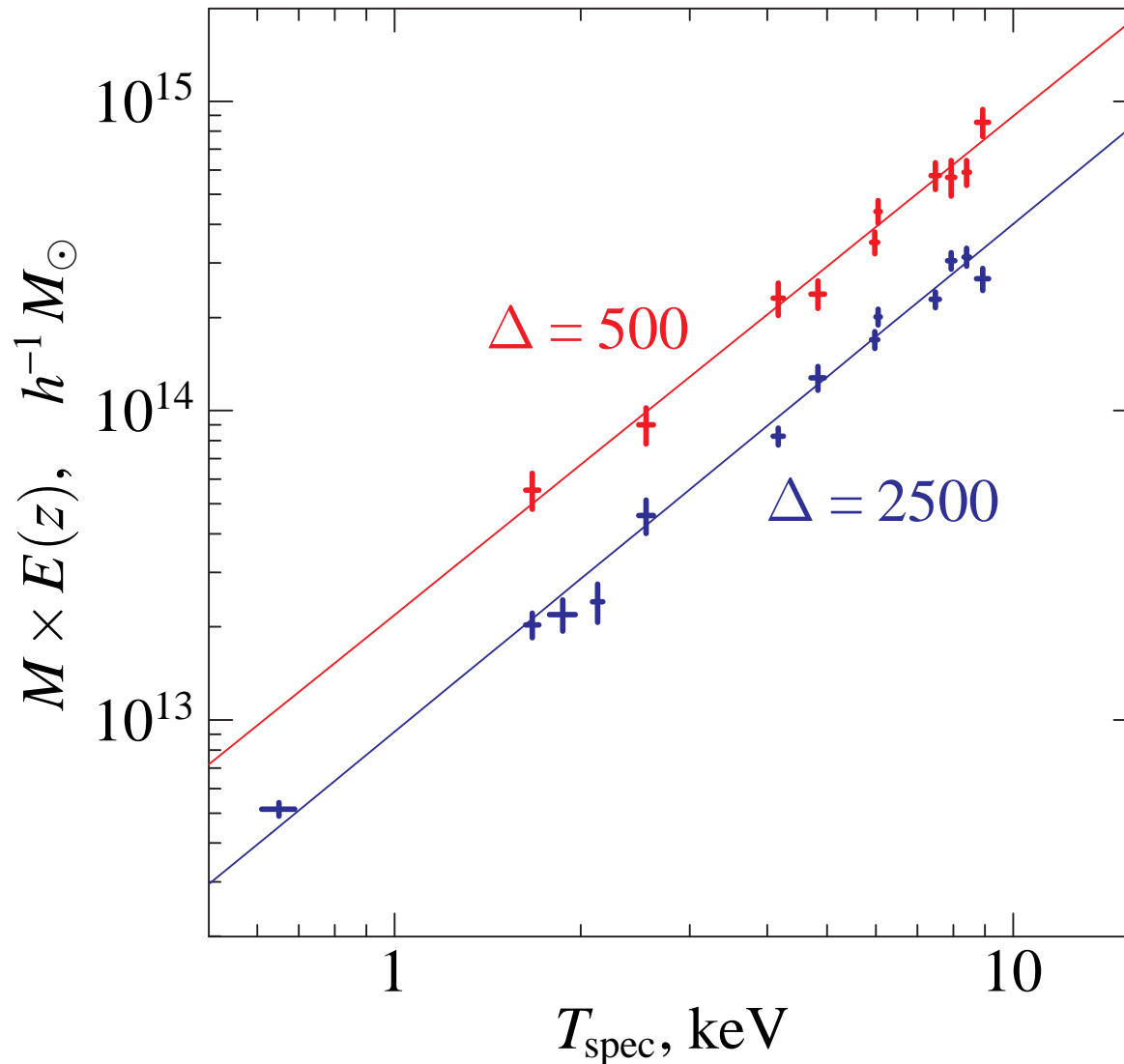
Temperature profiles from *Chandra*



Total and gas density profiles



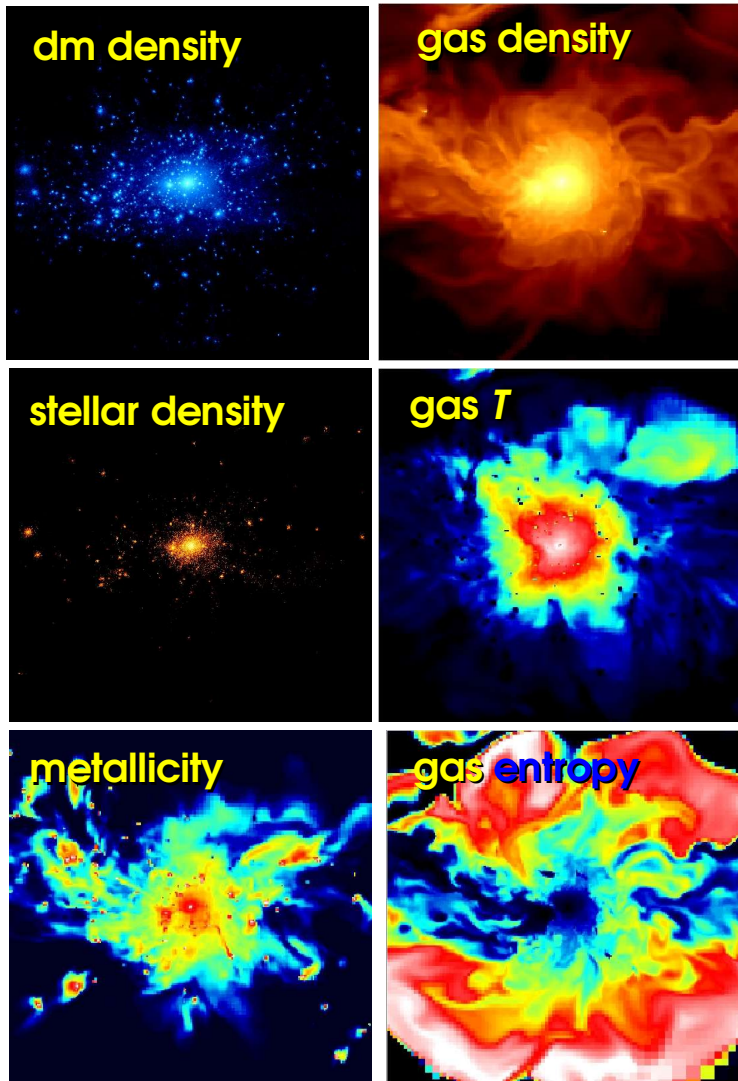
Observed M-T relation



- Relations are nearly self-similar ($M \propto T^{\alpha}$, $\alpha = 1.6 \pm 0.1$)
- Evolution is also self-similar, $M/T^{3/2} \propto h^{-1}(z)$ (Kotov & Vikhlinin '05)

Simulated cluster sample

Kravtsov et al.



11 individual galaxy clusters simulated with and without cooling

virial masses from 8×10^{13} to $10^{15} h^{-1} M_{\text{sun}}$

Cosmological N-body+gasdynamics ART code

(Kravtsov 1999, 2003; Kravtsov et al. 2002)

$m_{\text{dm}} = 3 \times 10^8 h^{-1} M_{\text{sun}}$, $m_{\text{*}} \sim 10^6 h^{-1} M_{\text{sun}}$

peak resolution $\sim 2 h^{-1} \text{ kpc}$

$2\text{-}4 \times 10^7$ mesh cells per cluster

Gasdynamics: Eulerian AMR (2nd order Godunov)

N-body dynamics of DM and stellar particles

Radiative cooling and heating of gas:

metallicity dependent taking into account

atomic and molecular processes

Star formation using the Kennicutt (1998) recipe

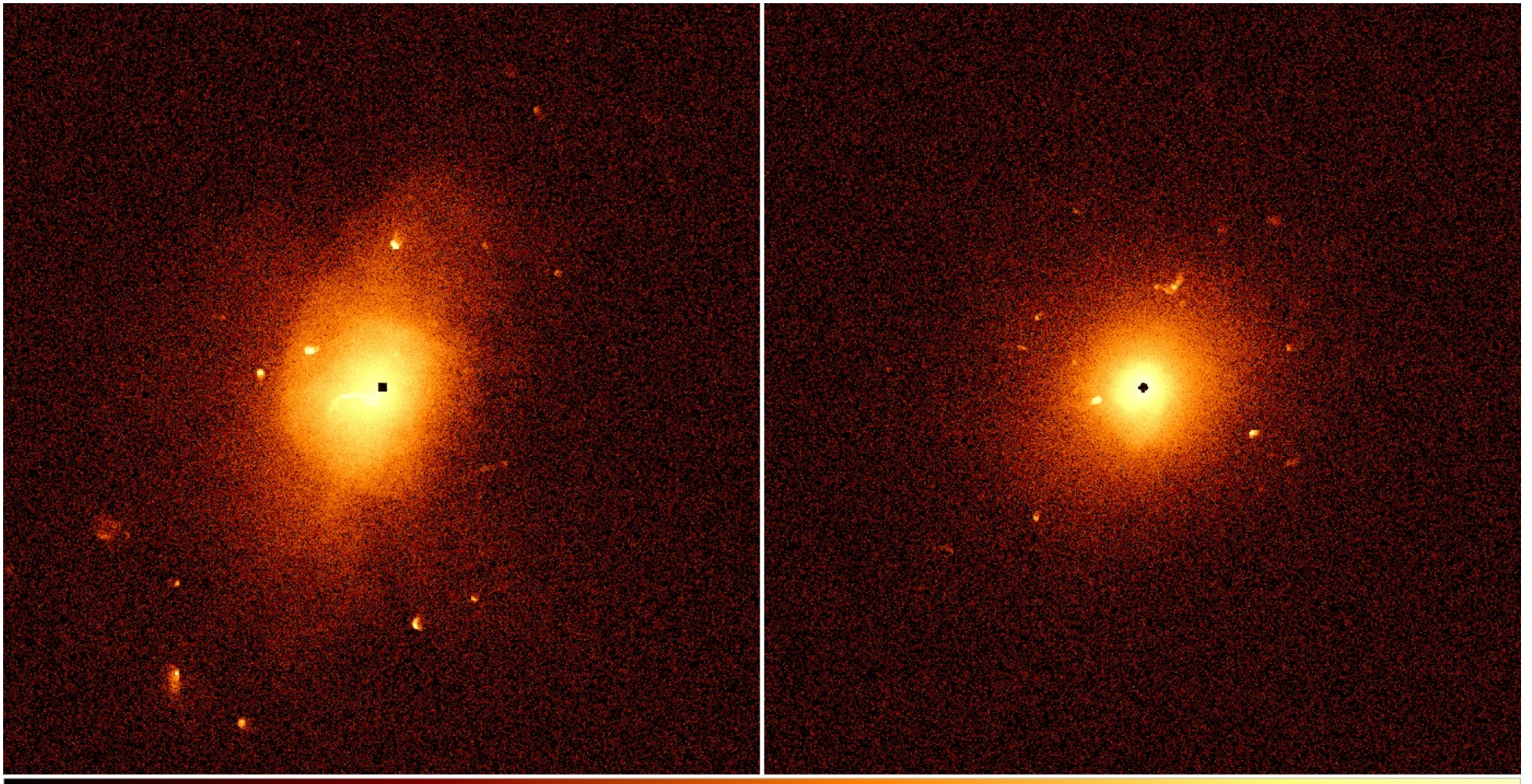
Thermal stellar feedback

Metal enrichment by SNI/IIa + **Advection of metals**

Testing Chandra measurement biases

work by D. Nagai, A. Kravtsov, A.V.

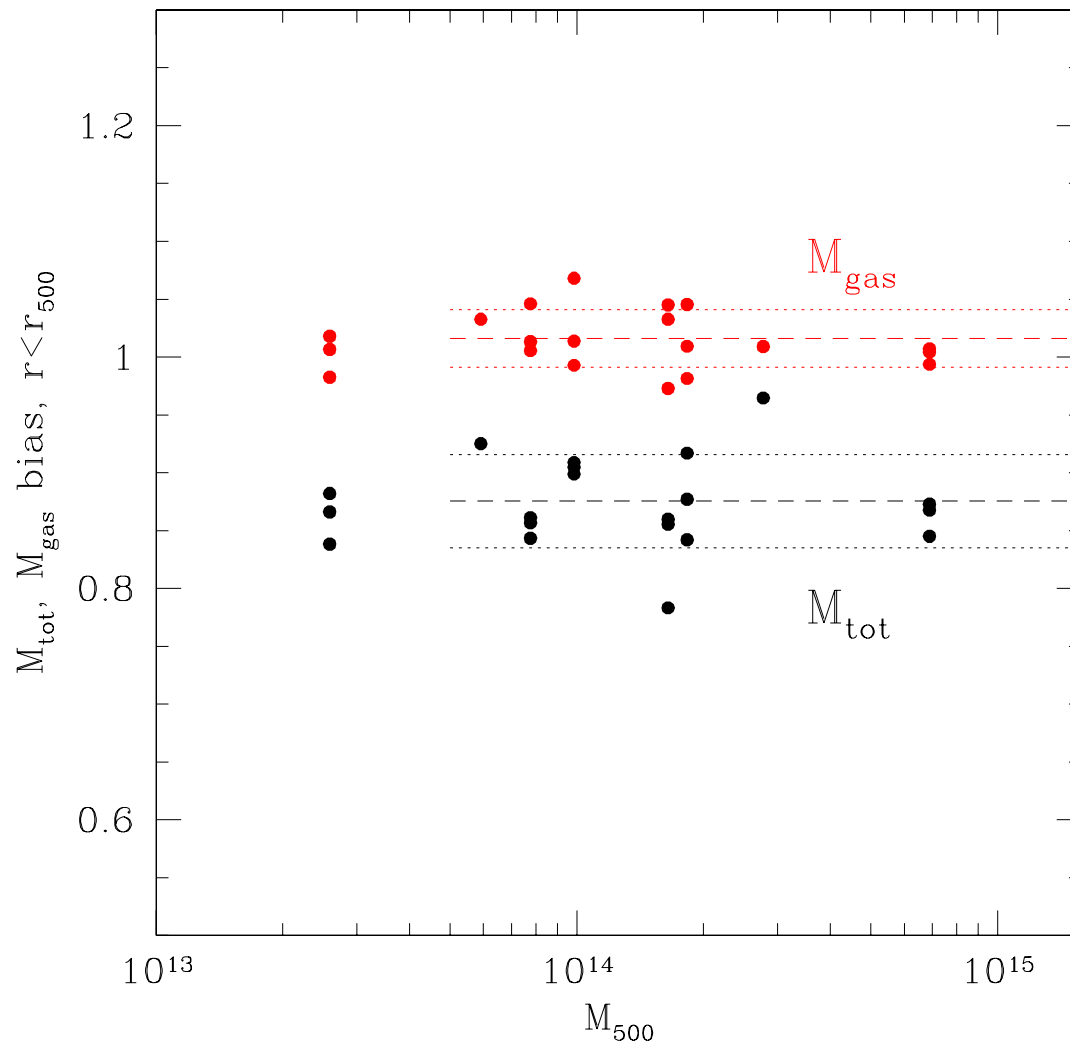
- generate “Chandra data” for clusters from cosmological simulations
- reduce with the real data analysis pipeline



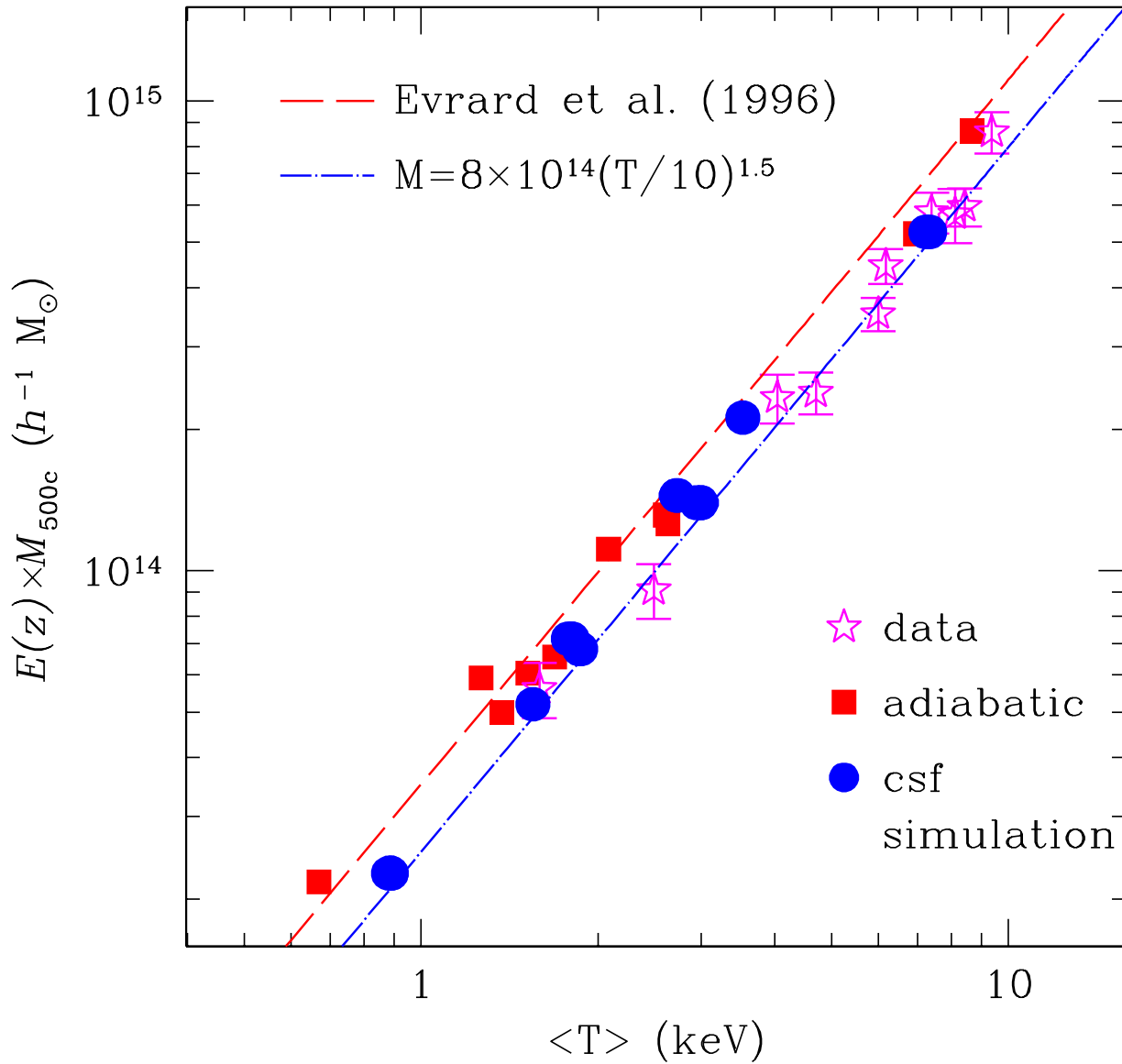
Testing Chandra measurement biases

work by D. Nagai, A. Kravtsov, A.V.

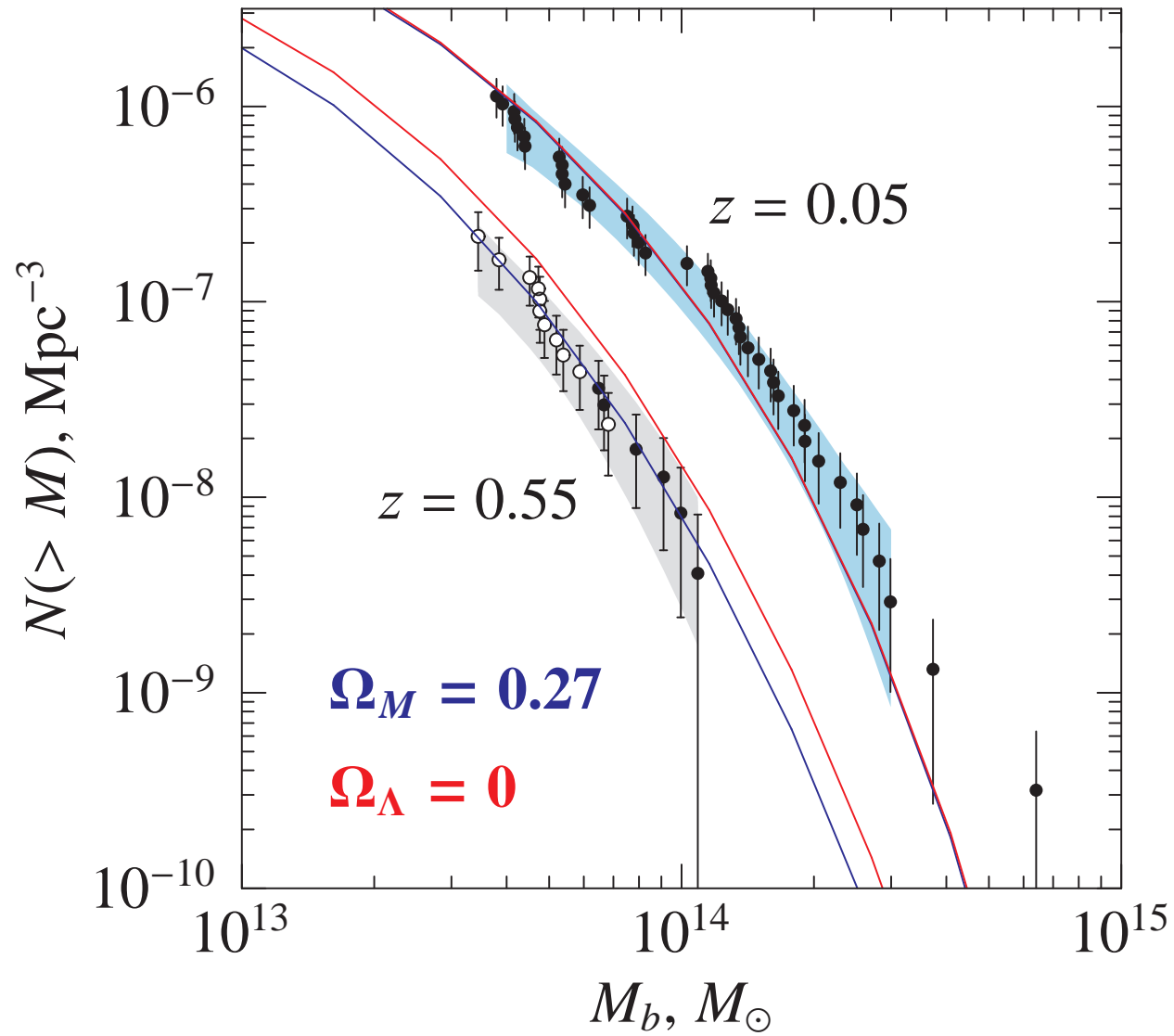
- generate “Chandra data” for clusters from cosmological simulations
- reduce with the real data analysis pipeline



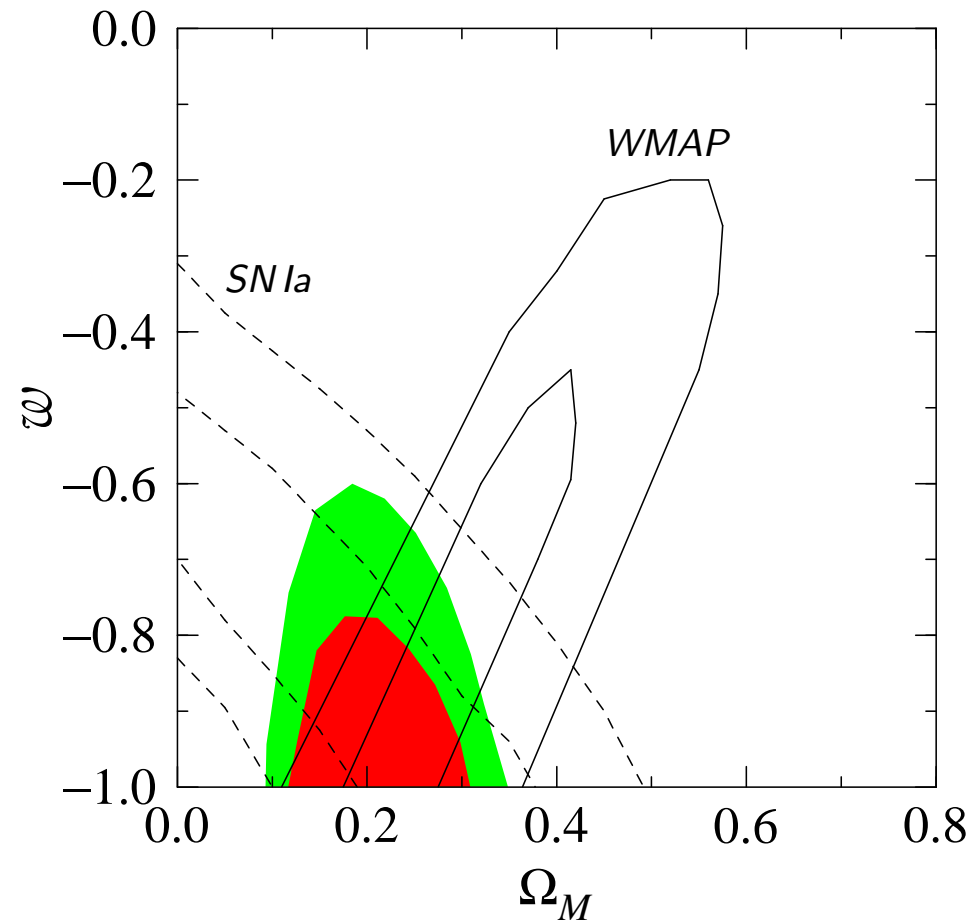
Are simulations realistic?



Current results: 160d



Current results: 160d: w



For $\Omega_M = 0.3$,
 $\omega < -0.9$ (68%),
 $\omega < -0.7$ (90%),
 $\omega < -0.6$ (95%)